





# Contents

3

**THE TYPICAL BUYING PROCESS**  
Plus Some of our Frequently Asked Questions

4

**ECONOMY MODELS**  
Greenhouses With Great Prices and  
Faster Delivery

6

**VALUE MODELS**  
Popular Models That Can Save You up to 20%  
Plus New Attached Models

8

**THE HENDRIK**  
Our Latest Limited Edition Model with a Beautiful  
Vestibule Entry

12

**GREENHOUSE MODELS**  
Our Cape Cod, Traditional, Cottage and  
Pacific Series

24

**ATTACHED GREENHOUSE DESIGN IDEAS**  
Five Tips to Maximize Your Lean-To or  
Gable-Attached Greenhouse

28

**COMMERCIAL GREENHOUSES**

32

**MERIDIAN ESTATE GREENHOUSES**

38

**CHOOSING GLASS OR POLYCARBONATE**  
Details on our Glazing Options and Climate  
Control Advice

40

**FOUNDATION AND INSTALLATION ADVICE**  
Best Practices Straight From the Experts

42

**CUSTOMIZATION OPTIONS**  
Design and Performance Options to Upgrade  
Your Greenhouse

44

**PRICING**  
Over 4000 Sizes to Choose From, a Collection of  
Some Pricing to Help With Your Plans

# 7 Questions Before You Buy



- 4

**What is the difference between polycarbonate and glass?**

Glass is beautiful with full light transmission. Polycarbonate offers shading, energy efficiency, and is virtually unbreakable. Mix and match to get the best out of your greenhouse!
- 5

**What size is best?**

In most cases, size is dictated by your yard. Our designs are modular and we can build to suit.
- 6

**Do I need a permit?**

Generally, a structure less than 110 square feet does not require a permit. Ask us about engineered drawings, stamped in any state or province if required.
- 7

**Do I need a foundation?**

Yes, a pressure treated wood frame or concrete is most common. All foundations must be level and square for easy installation. *See pages 40 and 41 for details on greenhouse foundations.*

- 1

**What will you grow in your greenhouse?**

Your climate and your ideal crop will determine the glazing that is right for you. Anything is possible with the right combination of glazing and heating/cooling.
- 2

**Which style of greenhouse best suits you?**

Thinking freestanding or home-attached? Freestanding allows you to maximize sunlight exposure. Home-attached offers convenient access to services and heat gain from the attached wall.
- 3

**Can I modify the greenhouse?**

Absolutely! Some common changes are adding a door or vents, sidewall height, adding decorative ridge cresting, pressure cap and more.

## What Does a Typical Buying Process Look Like?

- **Initial Quote:** Style, size and glazing consultation.
- **Design Process:** Modifying the greenhouse to suit your needs.
- **Climate Control:** Adding heating and cooling options based on your needs.
- **Confirm Foundation and Shipping Details:** Double checking foundation dimensions and more.
- **Confirmed Order:** Scheduled into production and approximate delivery date supplied with full payment upon delivery.





# Ready-to-Ship Economy Greenhouse Models



**The Sunhaven 8x8 – Offered at \$4,495**  
Twinwall Polycarbonate Glazing. White, green or brown frame. **Perfect beginner greenhouse.**



**The Legacy 8x8 – Offered at \$4,995**  
Single Glass Walls, Twinwall Roof. Brown frame only. **Ideal for three season growing in most climates.**



**The Westgrove 8x12 – Offered at \$8,895**  
With our most popular size this greenhouse typically means no permits needed. Add an optional twinwall polycarbonate roof. Decorative ridge cresting not included. **Limited time offer of white or black frame color only.**



**The Parkside 8x10 – Offered at \$11,495**  
Our stylish 8x10 greenhouse features 3mm single glass sidewalls and an optional twinwall roof. Designed with decorative ridge cresting and base panels, it eliminates the need for a foundation knee wall. **Ask about all glass options and white, green, or brown frame.**



**WIND AND SNOW LOADS**

## Highest Wind and Snow Loads

Your peace of mind is our priority. **Standard wind load ratings start at 85 mph, with a snow load capacity of 32 psf.** What sets us apart is our unwavering commitment to strength, offering upgraded load options. Whether heavy snow or hurricane-force winds, our structures can exceed expectations, supporting **over 100 psf for snow and winds up to 140 mph.** Need a permit? We provide drawings per local guidelines. Even without a permit, we can enhance load capacity with additional support. Your safety and satisfaction remain our top priorities.





# Unlock Your Savings Potential with our Value Models

Discover unbeatable prices with our 8x12 and 12x16 Value Models.

Why opt for these sizes? They feature a **lower base price** and the **flexibility to customize** with decorative ridge cresting, upgraded doors or windows, and enhanced wind and snow load capabilities.

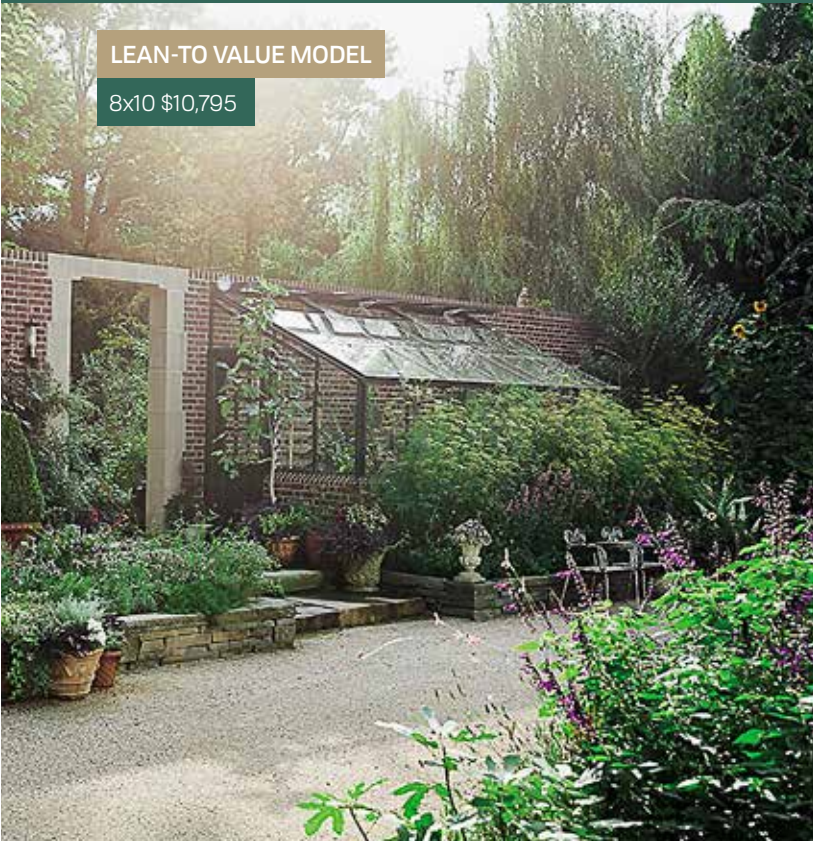
Even with these incredible savings, rest assured that our greenhouses maintain the same high standards of durability and strength you expect. Start creating your dream greenhouse today, without compromising on quality or affordability!

Also, choose **white, green or brown frame and your choice of glazing**, too. Pick 3mm single tempered glass or twinwall polycarbonate or a mix of both!



## Discover Your Perfect Attached Greenhouse. Two Value Models: Your Choice at \$10,795.

Offered in white, brown, green or black frame with single glass. Need another size or custom design? Call us today!



Our **Pacific Twinwall** greenhouse offers the **best price per square foot** and is the easiest to install too! This greenhouse provides a user-friendly installation process, without sacrificing strength. Your choice of our two sizes with white, green or brown frame.



# The Hendrik Greenhouse

Includes Onsite Project Supervisor\*

Introducing **The Hendrik Greenhouse**, a stunning new addition to our lineup that combines elegance, functionality, and premium craftsmanship.

**Key Features:**

- **Spacious Design:** 8x16 footprint with our steepest roof to effortlessly shed snow.
- **Distinctive Vestibule Entry:** A 6x3 vestibule adds charm, creating a welcoming focal point.
- **Modern Storefront Door:** A sleek upgrade from the traditional storm door.
- **Premium Finishes:** Choose Black or White frame, accented with polished pressure caps and decorative gutters and finials for a refined look.

Special pricing for 2025 only ~ Contact us today	
<b>6mm Full Sheet Single Pane Glass:</b> Lightweight and classic.	<b>\$49,995</b> Save over \$20,000
<b>16mm Full Sheet Double Pane Glass:</b> Extra insulating for year-round performance in North American climates.	<b>\$69,995</b> Save over \$33,000

\*Greenhouse not exactly as shown. Price subject to change.







# DESIGN & INSPIRATION





# Cape Cod Greenhouses

Featured in many international publications, the **Cape Cod greenhouse** exudes sophistication and charm. Featuring a **12/12 roof pitch set at a 45-degree angle**, the increased ridge height provides the ideal environment for small trees and hanging baskets. Thanks to its steep pitch, snow simply glides off the roof, making it an excellent choice for colder climates.



10x12 Single Glass | Starting At: \$15,545



16x24 Cape Cod 6mm Glass | Starting At: \$51,557



Adding double doors in the sidewall is a great choice if you are using larger furniture. Opening the doors on a warm evening during dinner is an invitation worth waiting for.



# Traditional Greenhouses

Our **Traditional series greenhouse** design, a beloved choice since the 1950s, is ideal for energy efficiency. With a **5/12 slope at 23-degrees**, this greenhouse model is tailor-made for those aiming to minimize the air volume requiring heating. Consider customizing your environment by combining different glazing options – polycarbonate roofing not only enhances energy efficiency but also provides effective shading. This model is well-suited for those with limited height constraints in their outdoor space.



8x12 Fivewall Polycarbonate | Starting at: \$14,235

A circulating fan is necessary in every greenhouse. It will help to maintain an even temperature by moving hot and cold air pockets and also help with the pollination of your plants. Did you know it also helps with pest and condensation control? Make sure your fan is rated for indoor/outdoor use.



16x20 Double Glass / Fivewall | Starting at: \$51,940



10x12 Traditional 6mm Glass Twinwall | Starting at: \$14,772



# Cottage Greenhouses

The **Cottage series greenhouse** is the perfect choice for homeowners looking to seamlessly integrate a greenhouse into their landscape. With its roof pitch matching common roof styles and architectural designs, this greenhouse offers **a mid-range roof pitch at 35 degrees**. This pitch offers both snow shedding capabilities and extra headroom for staging shelves, baskets, lighting, and other accessories.



All doors and vents have weather stripping to maximize energy efficiency.





# Pacific Greenhouses

Our **Pacific series greenhouse**, showcases a beautifully curved roof with a **5/12 slope at 23 degrees**. This classic design is available in single tempered glass, twinwall polycarbonate, or insulated double glass. Twinwall provides a practical choice offering built-in shading and energy efficiency and it is the easiest to install, too. Our glass greenhouses are crafted with genuine bent glass for a durable and authentic appearance compared to common plastic alternatives.



12x18 Single Glass | Starting at: \$24,600

**WILL THE TWINWALL POLYCARBONATE YELLOW OVER TIME?**

No, it has a UV inhibitor manufactured into the outside layer to prevent yellowing. In terms of sun degradation, it won't degrade its visible light transmission by more than 6% over 10 years.



16x20 Twinwall | Starting at: \$23,410



# The Power Of Customizing

Built to order, designed to last.

The secret to completely falling in love with your greenhouse is designing it just for you. Many homeowners are inviting the outdoors in. Dining al fresco with a fireplace or woodstove takes away the autumn chill. Creating a tropical oasis with hanging pots of ferns makes a welcome space for the end of the day.



Every gardener has a unique yard and a different dream.

Changing a door location or adding more doors is one of the most common changes but even better, create a connecting breezeway from the greenhouse to your home for year round use in colder climates is a great use of space.

From a functional perspective, adding another door for pass through air or double doors to create a wider opening for equipment and furniture is also helpful.

Creating a landscaping plan to locate the greenhouse will assist in finding the most intuitive access point in your yard. It is generally thought to locate a greenhouse based on sun exposure, but the truth is, placing the greenhouse where you will enjoy it the most should be your priority. Adding supplemental lighting or necessary shade is easy.



# Transform Your Home With a Greenhouse Oasis!

Embrace the light-filled attached greenhouse designed to elevate your living space.

Imagine extending your kitchen or dining area where fresh herbs, fruits, and vegetables are just steps away. With sunlight streaming in, your greenhouse quickly becomes the heart of your home.

The benefit of an attached greenhouse is convenient access to water and electricity, ensuring that caring for your plants and cleaning up is a breeze. Why limit yourself to indoor dining when you can host memorable al fresco dinners in your very own botanical retreat?

Your attached greenhouse becomes more than just another room and for a fraction of the cost. This sanctuary invites you to slow down, relax, and savor the beauty of nature at home. People are naturally drawn to the light, and these functional living spaces cost only 40% of a typical home addition.

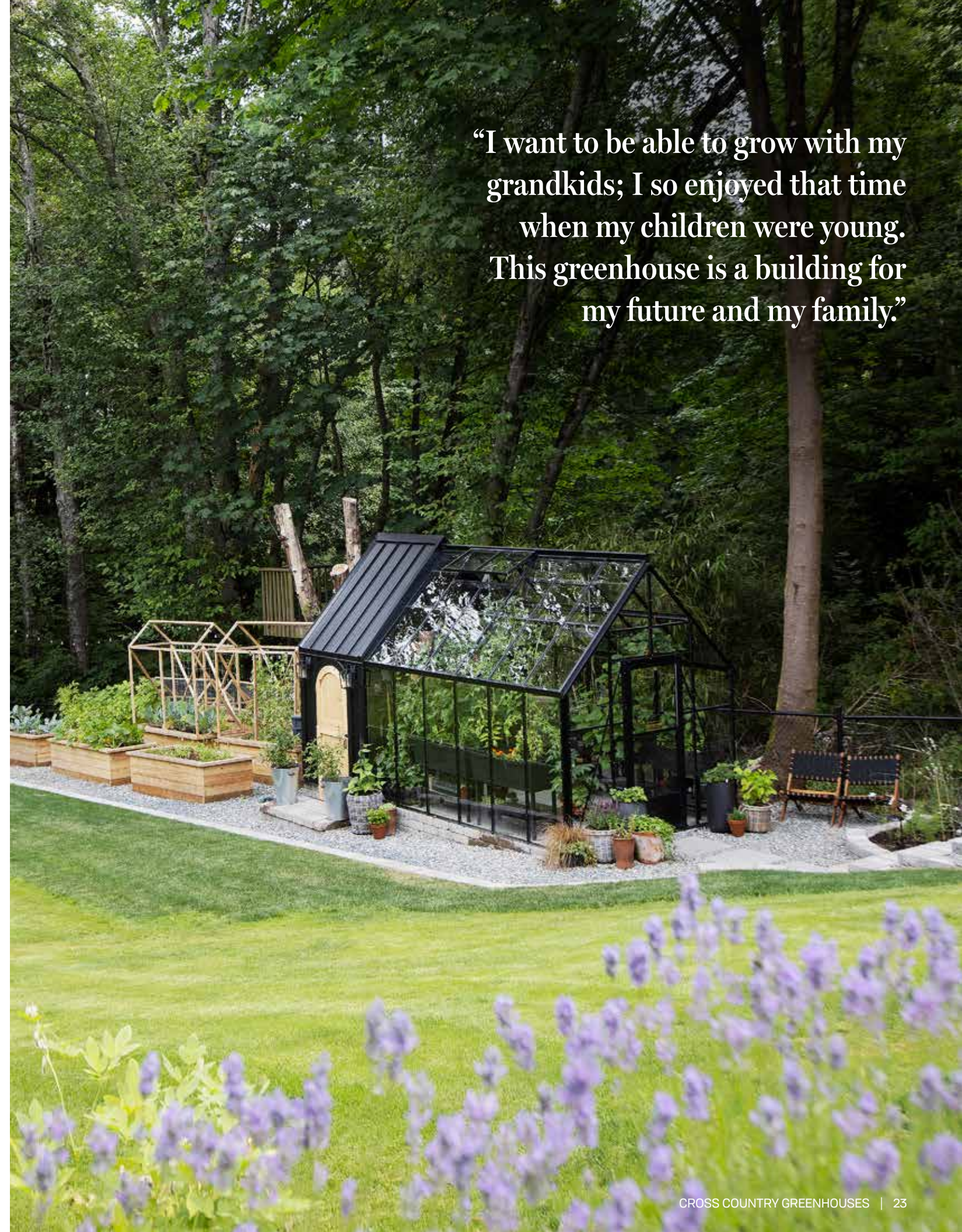
In crafting your space, the choice is yours: whether to embrace the allure of a dedicated outbuilding or seamlessly integrate with an existing wall. Elevate your design journey with op-



tions tailored to your unique vision and available space. Opting for an attached greenhouse ensures not only shelter from the elements but also longevity, transforming your space into a sanctuary of style and substance.



“I want to be able to grow with my grandkids; I so enjoyed that time when my children were young. This greenhouse is a building for my future and my family.”





Create an outdoor space that invites you to stay.  
Here are **five design ideas** to maximize your attached greenhouse.



**1. Lean into lots of growing space**

Line both sides of the greenhouse with benches and potting tables to maximize your yield. Think about training vines up the attaching wall and out of the roof vents!

**2. An extension of your home**

A gable attached greenhouse can be like a freestanding structure with an access door. Consider passive airflow through each sidewall for maximum enjoyment with double doors, extra wide side vents or glass louvres.

**3. Design doesn't have to be limited by space**

This greenhouse is a great example of working with what you have. A near-by tree and a sloped yard? With careful guidance from our design team, almost anything is possible.



**4. Increase your footprint**

Choose a greenhouse as a cost effective additional dwelling space (ADU) and enjoy more square footage, too!

**5. Take advantage of the sun**

In snowy Michigan, imagine the possibilities of our fivewall polycarbonate lean-to. By painting the south-facing wall a dark color, our customer will enjoy high-yield greenhouse gardening throughout the year.



# DESIGN & INSPIRATION





# Commercial Greenhouses

Our portfolio is vast with custom greenhouses for educational institutions, restaurant and retail centers, estates and event space, health care facilities, rooftops, amenity rooms and more.



View our Commercial Greenhouse Brochure on our website today!







Built in 1926, The Drakestone is a 20-story high-rise luxury condo building with a long list of amenities including an upscale rooftop conservatory which acts as the resident clubhouse. The **custom 20x40 conservatory** is expertly engineered with upgraded wind loads to ensure strength against hurricane force winds that are possible in the Dallas area.



◀ **Pavilion Park, located in Irvine California, is a 28'x30' community greenhouse in an award-winning master planned development.**

The greenhouse is the center of this property which houses tropical plants, workshops, and family events. It connects to a beautiful outdoor kitchen and eating area that encourages a welcoming atmosphere and a true neighborhood feel.



The ultimate in elegance and luxury. Enjoy our bespoke glasshouses with superb craftsmanship.



Thermally upgraded, the framing system allows for enjoyment in every season. For those wanting a more formal look, the stormproof construction will allow for a beautiful living and growing space whatever the elements might be.

Our talented design team uses the latest technology to push the boundaries and create the ideal aesthetic to suit your lifestyle.





# Discover the Meridian Estate Difference: Your Path to Luxury

Thermally Improved, Dedicated Project Management and Full Climate Control Support

Meridian Estate Greenhouses are luxury personified. Built for North American climates with the highest wind and snow loads and the toughest weather resistance, our structures boast unrivaled durability.

Our measured approach to insulating our structures separates us from the competition. Options include high performance low-E double glass, upgraded capping system, rubber weather sealed gaskets, thermally improved doors and heating and cooling equipment to help you achieve your desired result.

Heavy-duty framing systems are significantly more robust than overseas offerings in size, strength, and ability to customize.

Meridian Estate Greenhouses can provide wider spans and taller sidewall integration into any footprint. Each project includes a Project Manager to assist with the delivery, installation, and performance of the greenhouse.

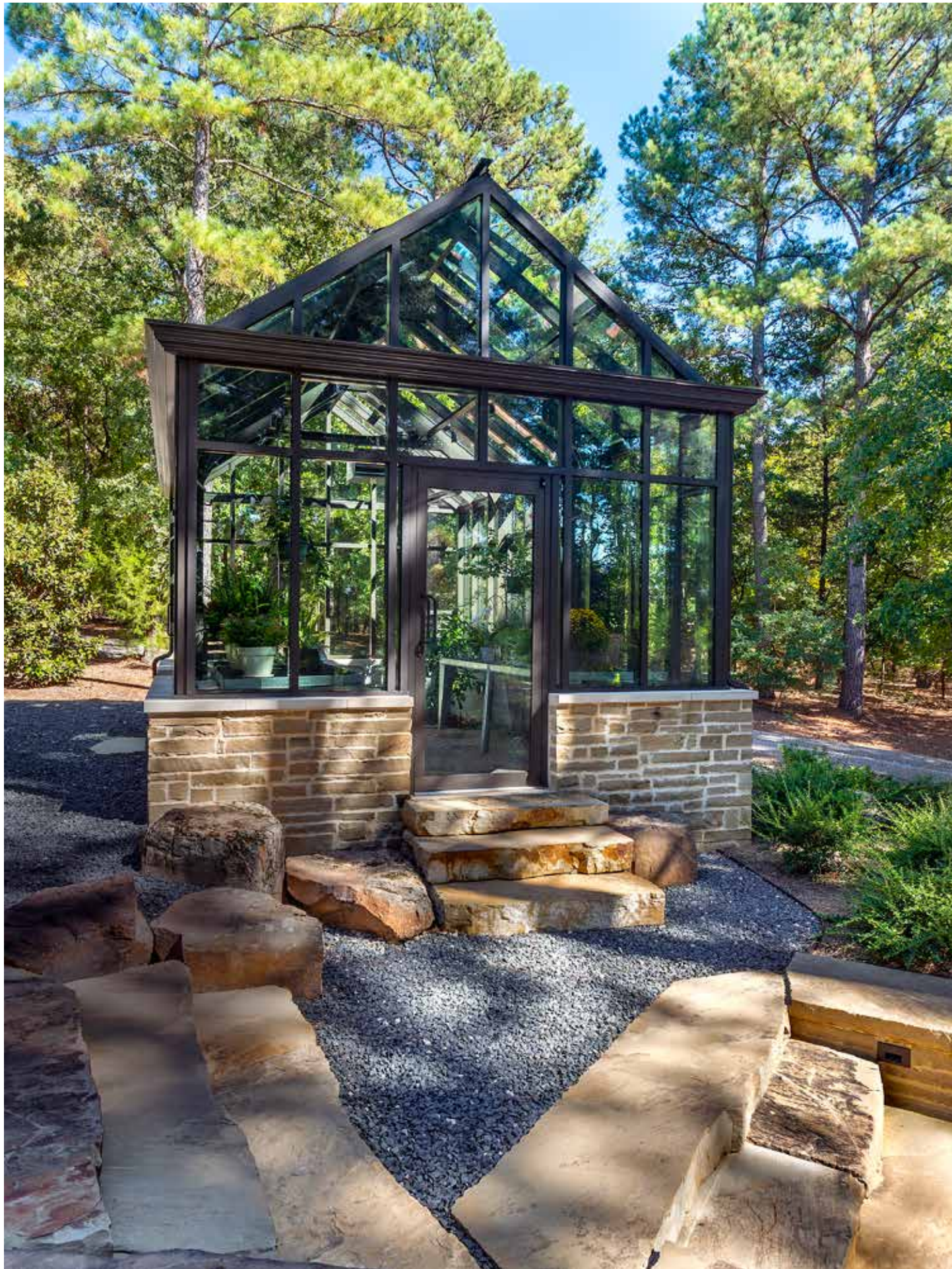
Your Project Manager will provide expert tips and support on how to successfully integrate environmental control systems, which is a critical piece of your buying journey.

Our lead and shipping times are shorter than overseas competition as the complete greenhouse project is manufactured in North America.

**Every Meridian Estate Greenhouse project is backed by our lifetime warranty.**









# Choosing Glass or Polycarbonate

Consult our team of experts for personalized advice on heating and cooling solutions, guaranteeing maximum enjoyment of your growing space.



**Things to consider when choosing glazing:**

**Where do you live?** Do you experience four seasons, stormy weather, hail, high winds or extreme heat?

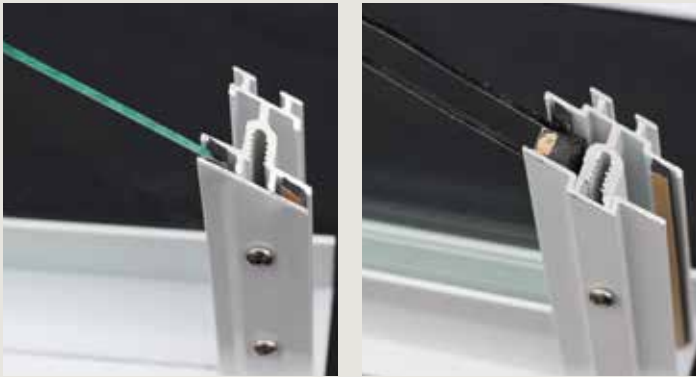
**What are your lowest nighttime temperatures?** we will calculate heat requirements with square footage and glazing to ensure your plants never suffer a cold shock or heat stroke.

**How many seasons will you grow?** If you are in a winter climate and wish to grow in four seasons, we will offer guidance on how to best achieve your goals.

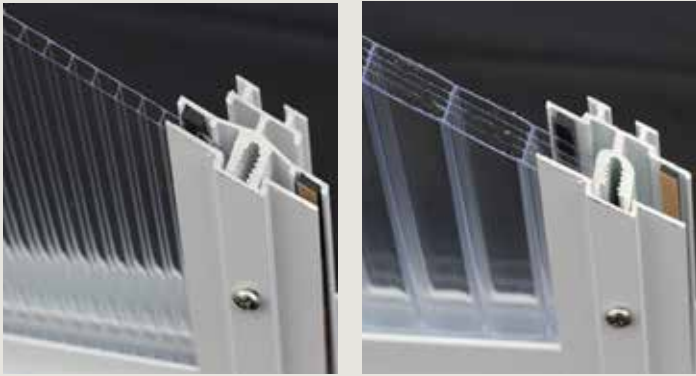
**What would you like to grow?** Deciding whether you would like a cool, warm or hot greenhouse will help us to make recommendations with glazing, heating and cooling too.

**Do you have natural shade nearby?** Greenhouses capture heat. A single glass greenhouse without natural shade nearby will require some sort of shading.

**Will you use the greenhouse for growing and living space?** Living space requires additional ventilation. An exhaust fan system is the fastest way to exchange hot air but not often the quietest. Ask our team for tips.



SINGLE GLASS GLAZING      DOUBLE GLASS GLAZING



TWINWALL GLAZING      FIVEWALL GLAZING



# Explore Glass Options

Luxury shouldn't break the bank. Elevate your greenhouse experience with our range of glass upgrades designed to enhance performance without compromising affordability.

Choosing the right glazing is key to maximizing energy efficiency and achieving the look you want for your greenhouse. As a custom greenhouse manufacturer, we believe having options matters. In addition to insulated double glass, high-performance low-E glass, reflective glass, and laminated glass, we also offer two types of single tempered glass: 3mm overlap glass and 6mm one-piece glass. Learn more about the features and benefits of each option below.



## STANDARD 3MM OVERLAP GLASS

- 3mm thick tempered safety glass
- Installed in 24" x 24" or 24" x 36" panels with 1/2" overlap
- Exposed stainless steel fasteners visible on each framing bar
- Easier to handle and install due to smaller panel size and lighter weight per piece
- Traditional look with a classic greenhouse feel
- Cost-effective option



## PREMIUM 6MM ONE-PIECE GLASS

- 6mm thick tempered glass for a sturdier, high-end finish
- Seamless panels; fewer joints for a sleek appearance
- No need to silicone the overlap to prevent air gaps or algae build up
- Creates a conservatory-style look without the high cost
- For customers seeking a modern design, consider adding decorative pressure cap with no exposed screws or hardware for a more substantial looking conservatory frame without the high cost.



# Ensuring a Solid Foundation for Your Greenhouse

Wondering if every greenhouse needs a foundation? The answer is yes, and we're here to guide you through the process.

**TYPES OF FOUNDATIONS:**

**WOOD:** Pressure treated or cedar wood is a popular choice because it is readily available and easy to adjust if you decide to move or extend your greenhouse in the future.



**CONCRETE:** For ultimate durability, a concrete foundation is unbeatable. Properly sealed, it provides long-lasting protection against the elements, and is particularly crucial for heavier glass greenhouses.



**KEY CONSIDERATIONS:**

**Level and Square:** The most important aspect of your foundation is ensuring it's both level and square. Failing to do so may lead to alignment issues with the frame and panels, complicating installation.

**Avoiding Errors:** If you encounter any concerns during assembly, don't hesitate to reach out to us first. Our greenhouse is meticulously pre-cut and pre-drilled, eliminating the need for on-the-spot adjustments. We're here to assist you every step of the way.

We will provide all the necessary hardware to anchor your greenhouse firmly in place. By prioritizing a solid foundation and adhering to these key considerations, you'll lay the groundwork for a seamless greenhouse installation that stands the test of time.

# Your Greenhouse Installation: From Delivery to Delight!

Your greenhouse has arrived, marking the start of an exciting journey. But what's the next step? Let's walk through the process together, ensuring a smooth and successful installation every step of the way.

**Preparation is Key:** Check your packing list emailed beforehand for crate details. Keep bundles intact until ready for assembly, ensuring everything remains organized and visible.

**DIY Made Easy:** With nearly 75% of installations done by homeowners or local contractors, assembling your greenhouse is simpler than you might think, similar to a small shed kit. Take your time and follow our new interactive instructions with accompanying video. You should know how to read a tape measure, use a level, and operate a drill. Remember you are creating a structure that has a lifetime warranty. Don't hesitate to ask for assistance if needed.

**Foundation Fundamentals:** A sturdy and level foundation sets the stage for a successful installation. Ensure your foundation is built to our specific dimensions. Precision here ensures perfect alignment during assembly.

**Teamwork Makes the Dream Work:** Enlist family, friends, or neighbors for efficient assembly. Embrace the process and allow yourself the gift of time – rushing can lead to mistakes.

**Prepare for Success:** Review your packing list, written instructions as well as the NEW installation videos on the manufacturer's YouTube channel located at: <https://www.youtube.com/@BCGreenhouseBuilders>

**Handling Your Shipment:** Keep in mind the weight and volume of your greenhouse shipment. An 8x12 glass greenhouse weighs approximately 1200 pounds and arrives with around 800 parts, including hardware. Ensure you have the people and equipment necessary to unload the shipment safely from the curbside delivery truck.

Enjoy the process, and soon you'll be enjoying the fruits – and flowers – of your labor in your very own greenhouse.



## Expert Installer Tips:

- Install the glazing foam tape before assembling the frame.
- Touch up paint is provided and works better when warm.
- Your utility providers are welcome to reach out to us before starting the job to discuss foundation and greenhouse details.
- Locating the greenhouse in a north-south position is great for raising summer and autumn crops as the sun's rays will be on the greenhouse from daybreak to sunset. Choose an east-west position for early spring and winter crops for the winter months.



# Elevate Your Greenhouse Experience with Customizations and Architectural Enhancements



**BASE PANELS**  
Decorative base panels add a touch of sophistication. Eliminates the need of a costly rock wall foundation.



**DECORATIVE RIDGE CRESTING**  
Cast aluminum cresting or ball finials adds a beautiful adornment to the ridge.



**TRANSOMS, GRIDS, WAGON WHEELS**  
Upgraded decorative options for a high-style aesthetic. Available in standard and estate greenhouses.



Passive ventilation is a gentle way to cool plants and people. From louvres to sidewall vents, here are several custom options to ensure optimal airflow in your greenhouse.



**VICTORIAN GUTTERS**  
Provides a distinctive, decorative look that will enhance the appearance of your greenhouse.



**CUPOLAS AND LANTERNS**  
Distinct details for your greenhouse roof to express your artistic vision and add visual appeal.



**VESTIBULES**  
Design details to enhance your greenhouse entry that seamlessly integrates with your greenhouse.



**AUTOMATIC SIDEWALL VENTS**  
Our extra wide sidewall vents are the perfect addition for a healthy cross breeze in your greenhouse.



**ROTOCRANK CASEMENT WINDOWS**  
Passive ventilation option that increases airflow in Meridian Estate line only.



**LOUVRES & TRANSOM WINDOWS**  
Passive ventilation that increases airflow available in Cross Country standard line.



**PORTICOS**  
Decorative element that adds architectural interest to the facade of the building.



**PARTITION WALLS**  
Creates multiple grow zones within your greenhouse allowing you to propagate a wide variety of plants.



**BREEZEWAY**  
An open-air passageway that connects two structures to provide protection from the elements.



**STANDARD STORM DOORS**  
Available in any color, pre-hung, lockable with an adjustable screen vent. Single or double doors available.



**COMMERCIAL STOREFRONT DOORS**  
Insulated with safety glass and deadbolt lock. Custom sizes, color and panic hardware options.

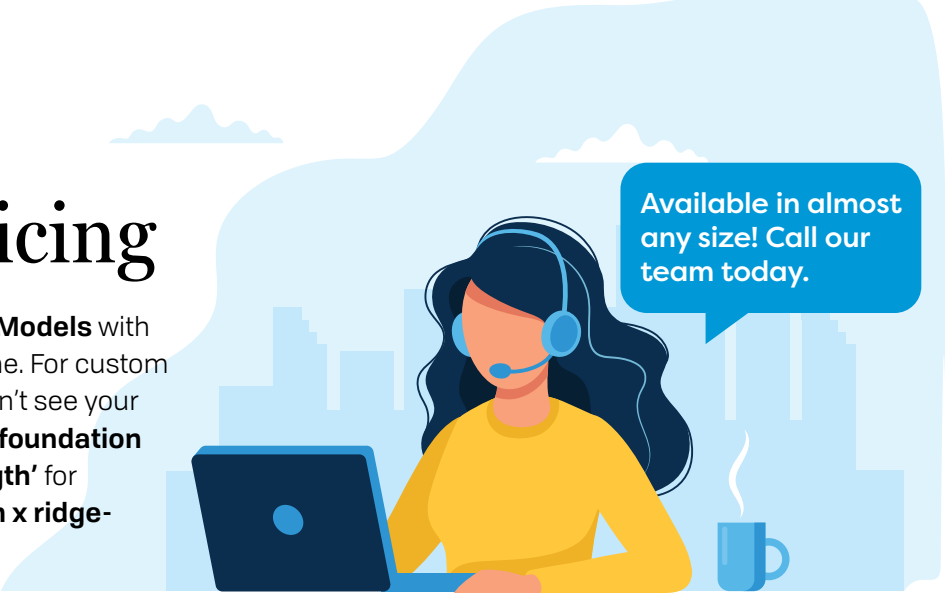


**CUSTOM DOORS**  
High style custom greenhouse options include sliding, stackable or garage doors for upgraded frame only.



# Greenhouse Pricing

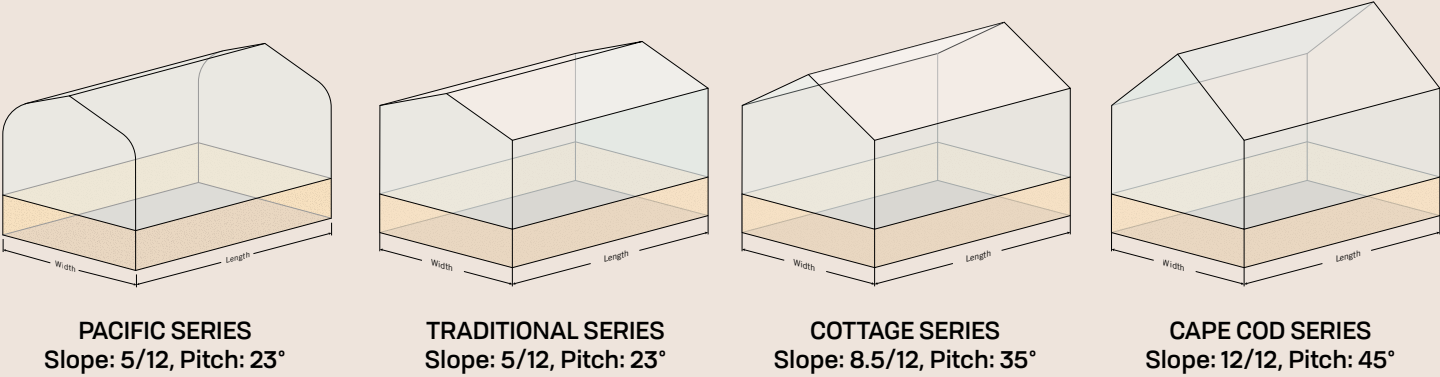
**Highlighted** prices indicate our **Popular Models** with your choice of white, green or brown frame. For custom colors, please contact our sales team. Don't see your ideal size? We offer any size and style. All **foundation measurements** posted are **‘width x length’** for freestanding models, and **‘width x length x ridge-height’** for home-attached models.



3MM OVERLAP SINGLE GLASS GLAZING ~ Tempered ~ 0.9 R Value ~ 90% Light Transmission					
FOUNDATION SIZE	TRADITIONAL	COTTAGE	CAPE COD	PACIFIC SIZE	PRICE
6' 7" x 8' 7½"	\$8,410	\$9,005	\$9,855	6' 2 ¾" x 8' 4"	\$10,840
8' 7½" x 10' 8"	\$9,790	\$11,035	\$12,275	8' 3¼" x 10' 4½"	\$12,635
8' 7½" x 12' 8½"	\$9,580	\$10,780	\$11,875	8' 3¼" x 12' 5"	\$15,200
10' 8" x 12' 8½"	\$12,960	\$14,065	\$15,545	10' 3¾" x 12' 5"	\$15,770
12' 8½" x 16' 9½"	\$17,465	\$18,995	\$21,415	12' 4¼" x 16' 6"	\$22,935
12' 8½" x 20' 10½"	\$22,150	\$24,540	\$27,300	12' 4¼" x 20' 7"	\$26,235
16' 9½" x 20' 10½"	\$24,710	\$29,000	\$34,685	16' 5¼" x 20' 7"	\$33,000
20' 10½" x 41' 3½"	\$64,685	\$70,000	\$72,275	20' 6¼" x 41'	\$77,135

6MM FULL SHEET SINGLE GLASS GLAZING ~ Tempered ~ 0.9 R Value ~ 88% Light Transmission			
FOUNDATION SIZE	TRADITIONAL	COTTAGE	CAPE COD
6' 7" x 8' 7½"	\$9,930	\$10,601	\$11,544
8' 7½" x 10' 8"	\$11,991	\$13,366	\$14,765
8' 7½" x 12' 8½"	\$12,373	\$13,757	\$15,075
10' 8" x 12' 8½"	\$15,880	\$17,219	\$18,981
12' 8½" x 16' 9½"	\$22,664	\$24,623	\$27,555
12' 8½" x 20' 10½"	\$27,229	\$30,022	\$33,282
16' 9½" x 20' 10½"	\$30,956	\$35,857	\$42,288
20' 10½" x 41' 3½"	\$77,904	\$84,483	\$88,344

## Greenhouse Roof Slopes and Pitches



16MM DOUBLE INSULATED GLASS GLAZING ~ Tempered ~ 2.04 R Value ~ 90% Light Transmission				
FOUNDATION SIZE	TRADITIONAL	COTTAGE	CAPE COD	PACIFIC SIZE
6' 7" x 8' 7½"	\$22,410	\$24,650	\$26,485	Meridian Estate Greenhouse Frame. Call for pricing.
8' 7½" x 10' 8"	\$28,245	\$31,180	\$33,500	
8' 7½" x 12' 8½"	\$29,610	\$32,670	\$35,280	
10' 8" x 12' 8½"	\$32,765	\$36,275	\$39,310	
12' 8½" x 16' 9½"	\$47,000	\$52,610	\$56,705	
12' 8½" x 20' 10½"	\$52,770	\$59,145	\$63,680	
16' 9½" x 20' 10½"	\$62,010	\$71,465	\$77,590	
20' 10½" x 41' 3½"	\$122,750	\$139,470	\$150,210	

6MM TWINWALL POLYCARBONATE GLAZING ~ 1.59 R Value ~ 82% Light Transmission					
FOUNDATION SIZE	TRADITIONAL	COTTAGE	CAPE COD	PACIFIC SIZE	PRICE
6' 7" x 8' 7½"	\$8,410	\$9,005	\$9,855	6' 2 ¾" x 8' 4 ¾"	\$7,805
8' 7½" x 10' 8"	\$9,790	\$11,035	\$12,275	8' 3¼" x 10' 5¼"	\$8,300
8' 7½" x 12' 8½"	\$9,580	\$10,780	\$11,875	8' 3¼" x 12' 5¾"	\$8,260
10' 8" x 12' 8½"	\$12,960	\$14,065	\$15,555	10' 3¾" x 12' 5¾"	\$11,715
12' 8½" x 16' 9½"	\$17,465	\$18,995	\$21,415	12' 4¼" x 16' 6¾"	\$15,425
12' 8½" x 20' 10½"	\$22,150	\$24,540	\$27,300	12' 4¼" x 20' 7¾"	\$20,265
16' 9½" x 20' 10½"	\$24,710	\$29,000	\$34,685	16' 5¼" x 20' 7¾"	\$23,410
20' 10½" x 41' 3½"	\$64,685	\$70,000	\$72,275	20' 6¼" x 41' 0¾"	\$62,450



16MM FIVEWALL POLYCARBONATE GLAZING ~ 3.0 R Value ~ 62% Light Transmission			
FOUNDATION SIZE	TRADITIONAL	COTTAGE	CAPE COD
6' 7" x 8' 7 1⁄2"	\$13,610	\$14,515	\$15,925
8' 7 1⁄2" x 10' 8"	\$14,125	\$16,575	\$19,465
8' 7 1⁄2" x 12' 8 1⁄2"	\$14,235	\$17,405	\$19,635
10' 8" x 12' 8 1⁄2"	\$17,445	\$18,815	\$21,250
12' 8 1⁄2" x 16' 9 1⁄2"	\$27,545	\$29,040	\$33,315
12' 8 1⁄2" x 20' 10 1⁄2"	\$30,990	\$33,120	\$37,500
16' 9 1⁄2" x 20' 10 1⁄2"	\$36,955	\$40,425	\$44,930
20' 10 1⁄2" x 41' 3 1⁄2"	\$72,360	\$87,265	\$96,055



**BioGreen Palma Twin Heater - \$250**  
Efficient, versatile heater with adjustable thermostat, 2 heating levels, recirculation mode, and durable design.



**Modine Gas Heater - 30000 BTU - \$1,995 60000 BTU - \$2,295**  
Low profile gas heater. Ships with custom brackets and glazing cutouts.



**NEW Ball Finial - \$140 ea**  
Add a classic finishing touch to your greenhouse with our decorative ball finials in cast aluminum.



**Decorative Cresting - \$60/linear foot Finials - \$60 each**  
Beautiful ridge adornment. Any length available.



**Side Vents - 24"x48" MK7 - \$640 Corkscrew - \$750**  
Provides great ventilation to any greenhouse, any glazing.



**Manual Glass Louvres - \$380**  
24" x 28" aluminum frame with adjustable glass louvre blades.



**Caframo Fan - \$60**  
Equalize greenhouse temperature and distribute air evenly. Two speeds, maintains constant air movement. Available in white or black.



**Vent Screens Roof Vent, Side Vent, Louvre, or Intake Shutter Screen - \$215**  
Designed to work with our vents and automatic openers.



**Thermo 2 Thermostat - \$150**  
An ideal controller for all climate control systems. Heating in the cold, ventilation in the heat.



**Shade Cloth - 12' Wide - \$13 per ft.**  
Interior/exterior cooling cloth. Uses a 70% horticulture cloth.

**Wire Top Bench: 25 1⁄2" x 48" - \$285.00 33 1⁄2" x 48" - \$300.00 Cedar Bench: 25 1⁄2" x 48" - \$250.00 33 1⁄2" x 48" - \$270.00**



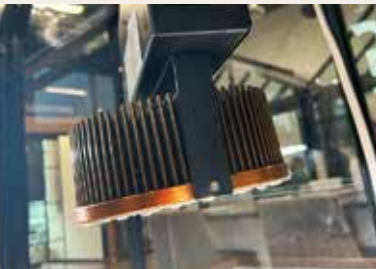
Wiretop Bench w/Cedar



Cedar Bench



**Cedar Potting Bench**  
A durable surface for planting trays and potting transplants. Stain it or let it weather naturally.



**Sun Harvest Grow Light - 50 Watt, 2' x 2' x 2' Spread - \$675.00 110 Watt, 4' x 4' x 4' Spread - \$890.00**  
True Spectrum LED light. Top of the line with lifetime warranty. No maintenance; bulb lasts for 25 years. 40% energy savings.

**Exhaust Fan Ventilation Package**  
Exhaust fan size is dependent on the size of the greenhouse. The complete exhaust fan ventilation package includes a fan, one or two motorized intake shutters (depending on the fan size) and one greenhouse cooling thermostat. **Includes metal intake shutters which we paint to match the greenhouse. Also includes all mounting hardware.**

AREA	VENTILATION PACKAGE	PRICE
UP - 120 sq ft	10" Package: 1 INTAKE (690 CFM)	\$1,865
121 - 200 sq ft	14" Package: 2 INTAKES (2170 CFM)	\$2,630
201 - 300 sq ft	18" Package: 2 INTAKES (3200 CFM)	\$2,675

PACIFIC LEAN-TO ATTACHED (width x length x ridge height)			
SINGLE GLASS FOUNDATION SIZE	SINGLE GLASS PRICE	TWINWALL FOUNDATION SIZE	TWINWALL PRICE
6' 2 7⁄8" x 10' 4 1⁄2" x 8' 6 1⁄8"	\$11,315	6' 2 7⁄8" x 10' 5 1⁄4" x 8' 6 1⁄8"	\$8,705
6' 2 7⁄8" x 12' 5" x 8' 6 1⁄8"	\$12,185	6' 2 7⁄8" x 12' 5 3⁄4" x 8' 6 1⁄8"	\$9,285
8' 3 3⁄8" x 10' 4 1⁄2" x 9' 4 5⁄8"	\$12,760	8' 3 3⁄8" x 10' 5 1⁄4" x 9' 4 5⁄8"	\$10,060
8' 3 3⁄8" x 12' 5" x 9' 4 5⁄8"	\$13,710	8' 3 3⁄8" x 12' 5 3⁄4" x 9' 4 5⁄8"	\$10,730
8' 3 3⁄8" x 20' 7" x 9' 4 5⁄8"	\$19,535	8' 3 3⁄8" x 20' 7 3⁄4" x 9' 4 5⁄8"	\$15,135
10' 3 7⁄8" x 12' 5" x 10' 3 1⁄8"	\$15,615	10' 3 7⁄8" x 12' 5 3⁄4" x 10' 3 1⁄8"	\$12,995
12' 4 3⁄8" x 20' 7" x 11' 1 5⁄8"	\$29,285	12' 4 3⁄8" x 20' 7 3⁄4" x 11' 1 5⁄8"	\$23,235

TRADITIONAL LEAN-TO ATTACHED (width x length x ridge height)					
FOUNDATION SIZE	3MM SINGLE GLASS	6MM SINGLE GLASS	TWINWALL	FIVEWALL	DOUBLE GLASS
6' 5" x 10' 8" x 8' 7 1⁄8"	\$9,545	\$11,115	\$9,545	\$12,860	\$24,215
6' 5" x 12' 8 1⁄2" x 8' 7 1⁄8"	\$10,135	\$11,862	\$10,135	\$13,835	\$25,580
8' 5 1⁄2" x 10' 8" x 9' 5 5⁄8"	\$10,795	\$13,132	\$11,200	\$14,695	\$27,810
8' 5 1⁄2" x 12' 8 1⁄2" x 9' 5 5⁄8"	\$11,905	\$14,023	\$11,905	\$15,850	\$29,410
8' 5 1⁄2" x 20' 10 1⁄2" x 9' 5 5⁄8"	\$16,140	\$19,201	\$16,140	\$23,555	\$39,590
10' 6" x 12 8 1⁄2" x 10' 4 1⁄8"	\$14,045	\$16,575	\$14,045	\$18,200	\$33,060
12' 6 1⁄2" x 20' 10 1⁄2" x 11' 2 5⁄8"	\$25,010	\$29,274	\$25,010	\$29,970	\$50,605



V9 APR 2025



AUTHORIZED RETAILER FOR

**CROSS COUNTRY  
GREENHOUSES**

SERVING GARDENERS SINCE 1951



**Greenhouse Style  
CORPORATION**

Toll Free: 1-800-665-2124

Fax: 1-888-273-1251

[info@greenhousetyle.com](mailto:info@greenhousetyle.com)

[www.greenhousetyle.com](http://www.greenhousetyle.com)

AUTHORIZED RETAILER FOR CROSS COUNTRY GREENHOUSES